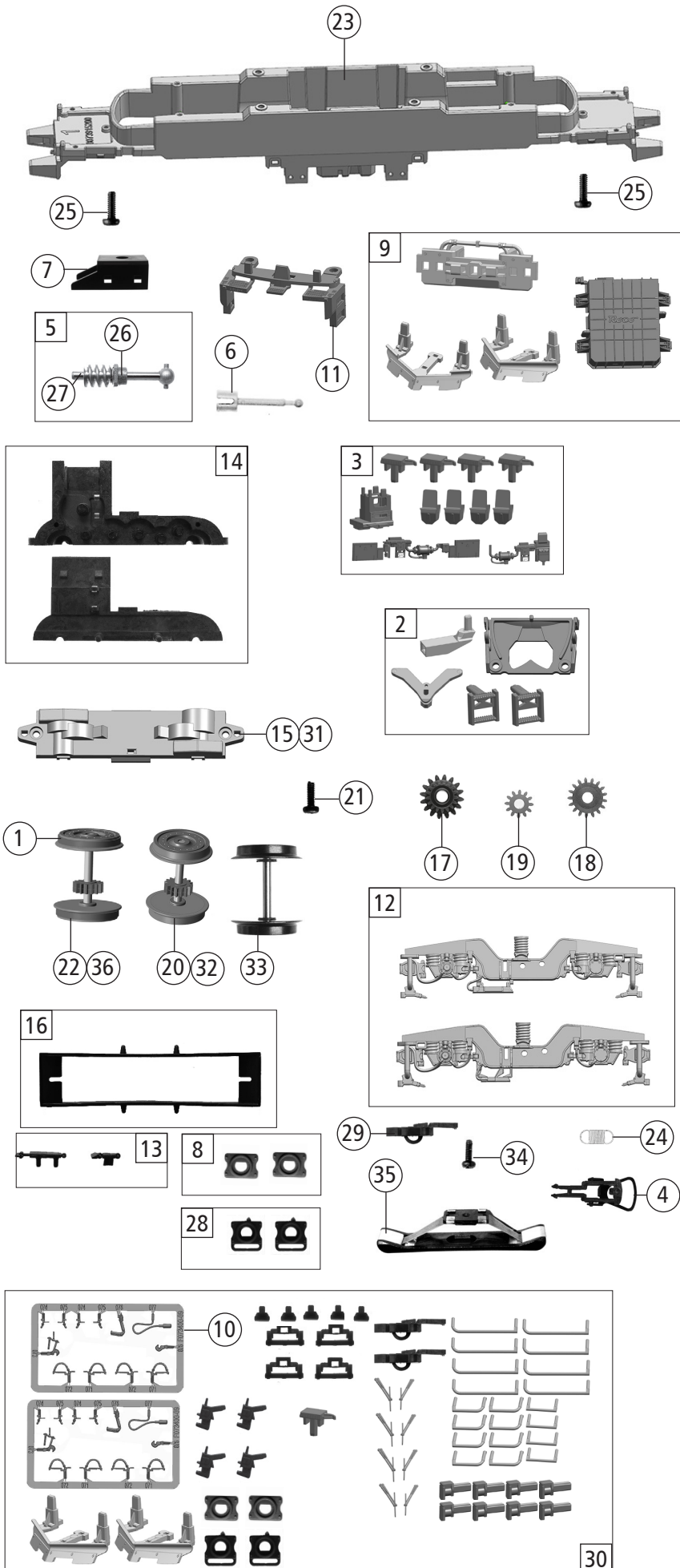


Pos. Nr. Pos.no.	Beschreibung Description	Art.-Nr. Art.no.	Preisgruppe Price bracket
73935	RAILLOGIX VECTRON	=	
73936		=	
79936		~	
1	Gehäuse kpl.Betr. Nr. 6193 623-6 Body complete Loco no. 6193 623-6	145277	33
2	Stirn- + Seitenfenster Front and side window	143901	9
3	TS - Lichtleiter Part set - Light conductor	141148	14
4	Führerstand + Himmel Driver's cab and ceiling	141149	8
5	E-Lokführer E-loco driver	110407	6
6	TS - Dachgitter, ... Part set roof grid	141150	10
7	Antenne kurz Antenna short	141151	3
8	Antenne lang Antenna long	141200	3
9	Antenne Antenna	141152	3
10	Frontplatte Front plate	145356	8
11	Türgriff Door handrail	141154	4
12	Dachbaugruppe kpl. Roof assy complete	144347	35
13	Verteilerplatte Distribution plate	141583	3
14	Stromabnehmer Typ 8 Pantograph Typ 8	85488	23
15	TS-Wischer links und rechts,Horn Part set wiper left and right,signal horn	141155	6
16	TS - Isolatoren Part set isolators	141156	5
17	TS - Isolatoren Part set isolators	115978	7
18	Dachleitung Roof wires	141157	12
19	SK-Schraube M1,6x5 mm Self-tapping screw M1,6x5 mm	115317	4
20	TS - Abdeckungen Part set covers	141137	4
21	Platine kpl. m. LED-Pl. o.Anz. PCB complete w. LED-PCB	141138	24
22	Brückenstecker - Plux16 TVS Jumper - Plux16 TVS	133241	10
23	Motor m. 2Schwungm.+Kardansch. Motor with 2 flywheels and cardan reception	85112	28
24	Kardanschale kurz 1,5 mm Cardan reception short 1,5mm	87129	4
25	Kohlebürste Carbon brush	89743	6
26	Bürstenfeder D=2,8/1,6 L=8 mm Brush spring	114197	3
27	Motordämpfer Motor silencer	113376	4
28	TS - Lautsprecherbox + Platten Part set loudspeaker box and plates	141139	5
29	Puffer eckig Rectangular buffer	122789	3
30	GF-Schraube M2x5 mm Self-tapping screw M2,2x5 mm	114966	3
31	Kontaktfeder D=2,4 L=11,6 mm Contact spring	116876	3
32	Steckdose Socket	141163	3
33	Stromabnehmer Holland Pantograph Holland	85401	23
34	TS - Griffe - schwarz Part set handles black	141238	6
35	UIC-Dose UIC-Socket	141559	3
36	Innenbeleuchtung Interior lighting	141659	4
37	TS - LZB Antennen Part set - Antenna	122803	6
<b>Sound</b>			
38	Platine kpl.m.LED-Platine f. So. PCB complete with LED-PCB f. S.	141166	28
39	Sounddecoder Sound-decoder	129000	39
40	Lautsprecher Loudspeaker	129524	13



73935	RAILLOGIX	VECTRON	=	
73936			=	🔊
79936			~	🔊
Pos. Nr. Pos.no.	Beschreibung Description	Art.-Nr. Art.no.	Preisgruppe Price bracket	
1	Hafrings.10Stk.12,9 bis 14,6m Traction tyre set,10 pcs.,12,9-14,6 mm	40070	---	
2	TS - Kinematik, Deichsel, ... Part set kinematics and drawbar	141136	8	
3	TS - Sandkasten, Antenne, ... Part set sand box,antenna	141144	7	
4	Standardkupplung Standard coupling	89246	6	
5	Schneckensatz mit Kardankugel Set of worm gear incl.cardan ball	110377	13	
6	Kardanwelle 24,7 mm Cardan shaft 24,7mm	107011	4	
7	Schneckendeckel Worm gear cover	122822	4	
8	Pufferflansch links und rechts Buffer flange left and right	136487	5	
9	TS-Schienenräumer,Trafowanne Part set rail guard,transformer tub	141140	12	
10	TS - Bremsschläuche + Zughaken Part set of brake tubes & coupling hooks	139832	7	
11	Schürze lang Skirt long	144345	10	
12	DG-Blende l+r 2tlg. Bogie left and right 2 parts	141194	12	
13	TS - Blendesteckt. Set of cover plug-in parts	122956	5	
14	Getriebeatz 2-tlg. Gear set 2-parts	122816	11	
15	Getriebeboden Gear bottom	141159	7	
16	Kontaktalter mit Litzen Contact support with leads	137826	9	
17	Schneckenrad doppelt Z=16/17 Worm gear wheel double Z=16/17	86419	6	
18	Zahnrad Z=17 M=0,4 Gear wheel Z=17 M=0,4	127541	4	
19	Zahnrad Z=12 M0,4 Gear wheel Z=12 M0,4	127542	4	
20	Radsatz m. Zahnrad o. Hafring Wheelset w.gear wheel w/o traction tyre	141160	12	
21	GF-Schraube M1,6x4 mm Self-tapping screw M1,6x4 mm	114850	3	
22	Radsatz m.2 Hafringen+Zahnrad Wheelset w.2 traction tyres w.gear wheel	141161	13	
23	Grundrahmen Basic frame	141135	16	
24	Zugfeder - 2,5x5,8x0,15 mm Draw spring - 2,5x5,8x0,15 mm	86208	3	
25	GF-Schraube M2x6 mm Self-tapping screw M2x6 mm	114828	3	
26	Lager f. Schneckenachse D=2H7 Bearing for worm gear axle	89749	6	
27	Beilagescheibe 2,1x4/0,2mm Washer 2,1x4/0,2mm	86108	3	
28	Pufferflansch links und rechts Vitrine Buffer flange left and right for showcase	141162	4	
29	Kurzkupplung - Vorentkupplung Short coupling - pre-uncoupling	115550	6	
30	Zurüstbeutel Bag of accesories	144348	19	
<b>AC-Wechselstrom</b>				
31	Getriebeboden AC Gear bottom AC	130040	8	
32	Radsatz m.Zahnrad o.Hafring AC Wheelset w.gear wheel w/o traction tyre AC	141167	12	
33	Radsatz o.Hafring o.Zahnrad AC Wheelset w/o traction tyre w/o gear wheel AC	141242	11	
34	Schraube M1,5x5 mm Screw M1,5x5 mm	108137	3	
35	Schleifer 42 mm o. Halteklammer Center pick-up 42 mm	86030	14	
36	Radsatz m.2 Hafringen m.Zahnrad AC Wheelset w.2 traction tyres w.gear wheel AC	141168	13	